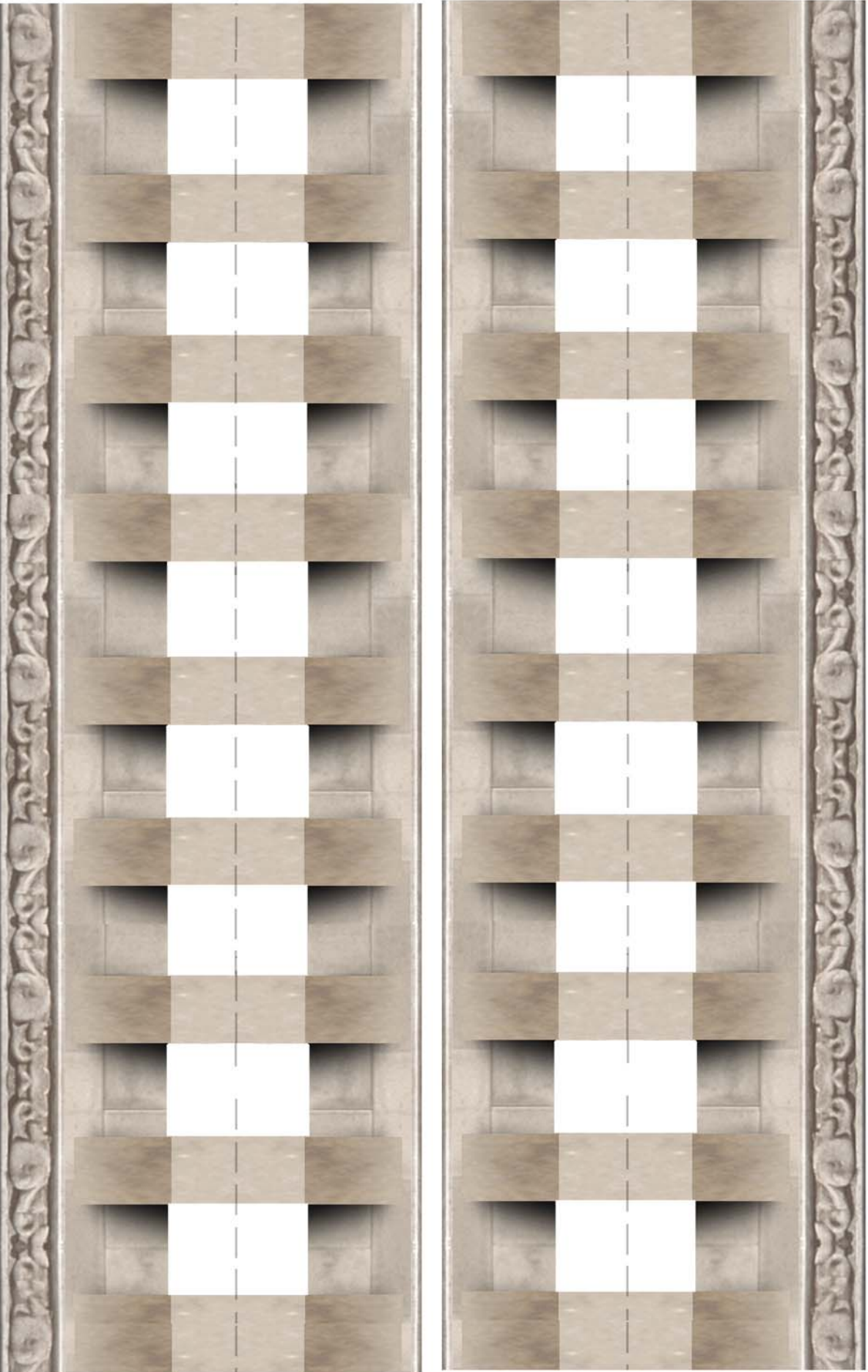


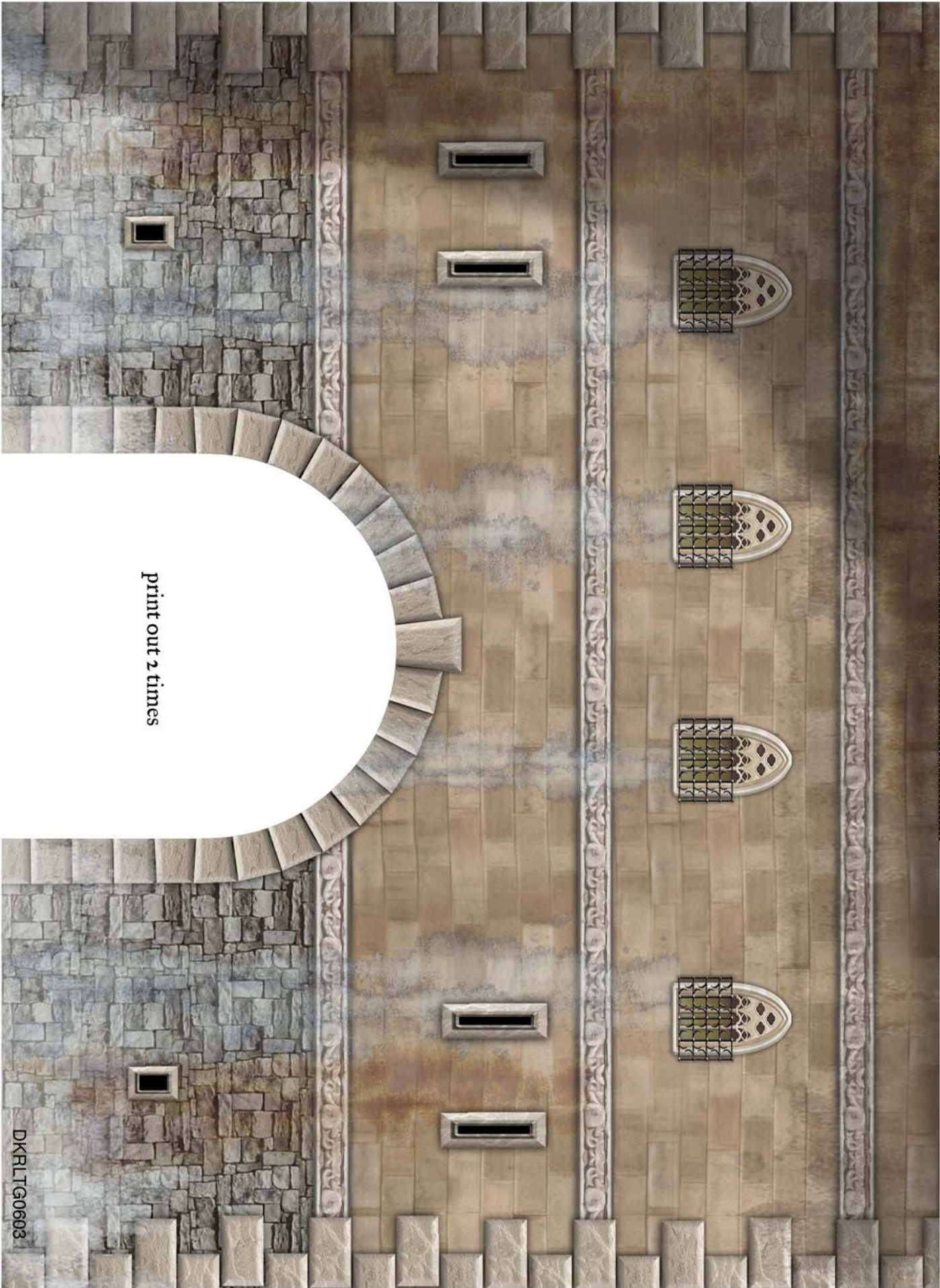
Corner pieces



CRENELLATIONS

TAB

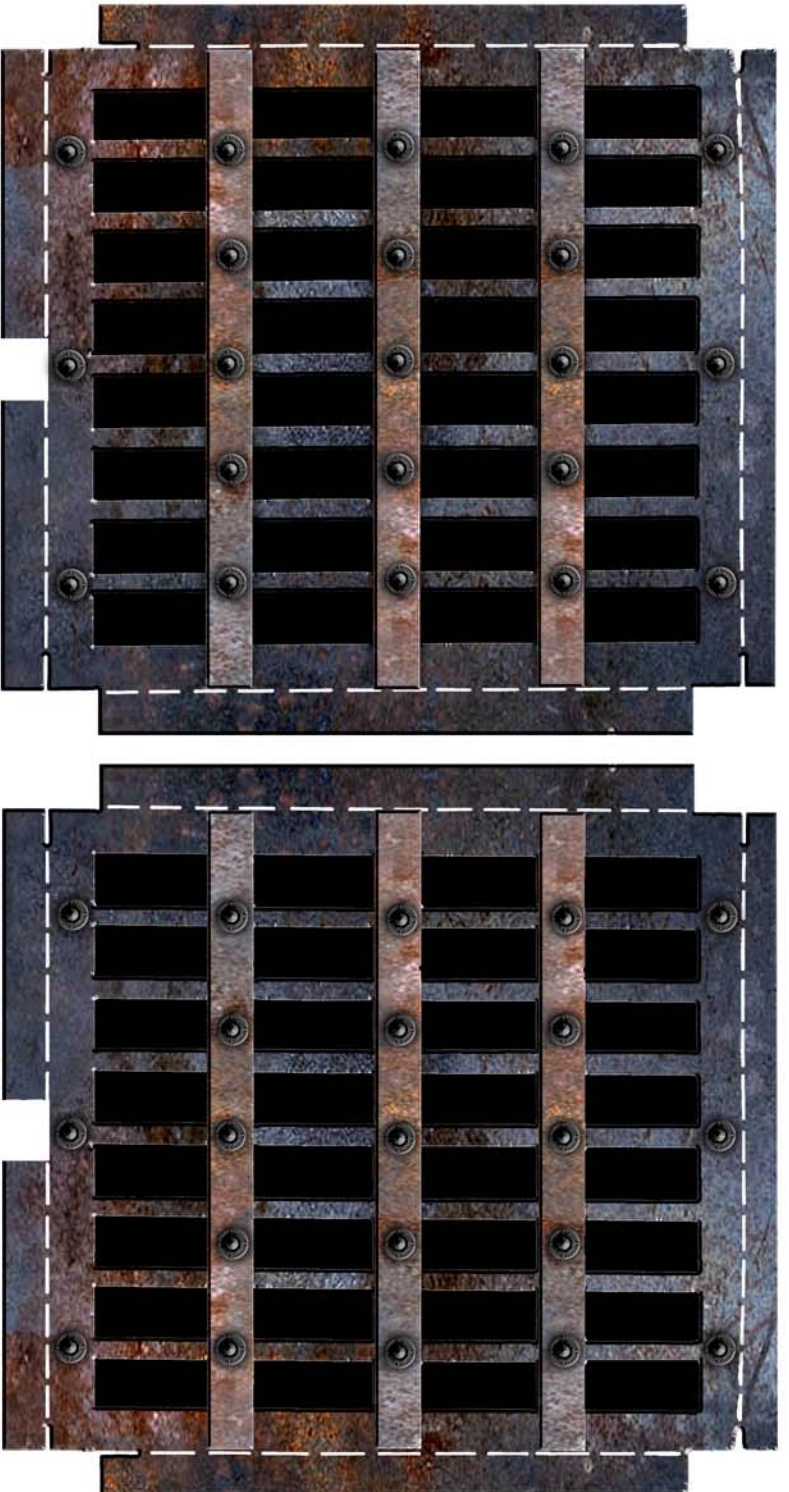
fold tab inward, this supports the top



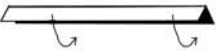
print out 2 times

DKRLLTG0603





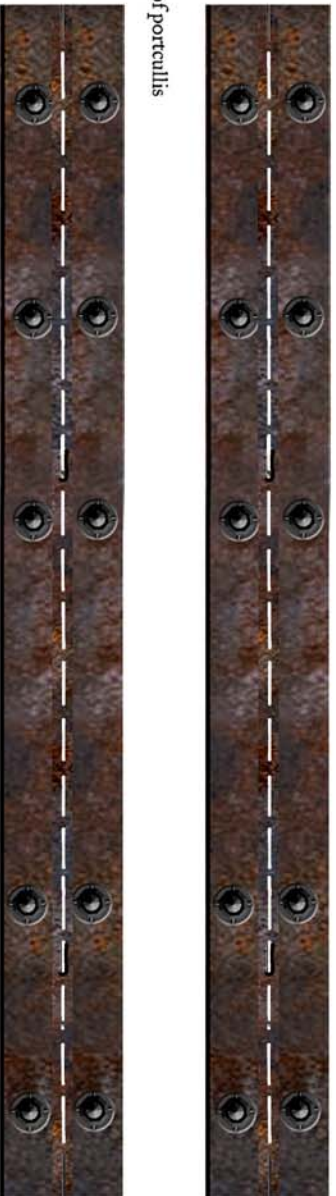
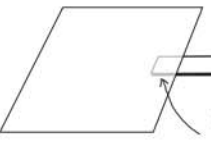
I.
score, fold over, and glue to
create portcullis lift handle



2.
bend over top of lift handle



3.
glue to back of portcullis



RUINS

left side

[print out 2 times to create box]



fold and glue to base

fold and glue to base



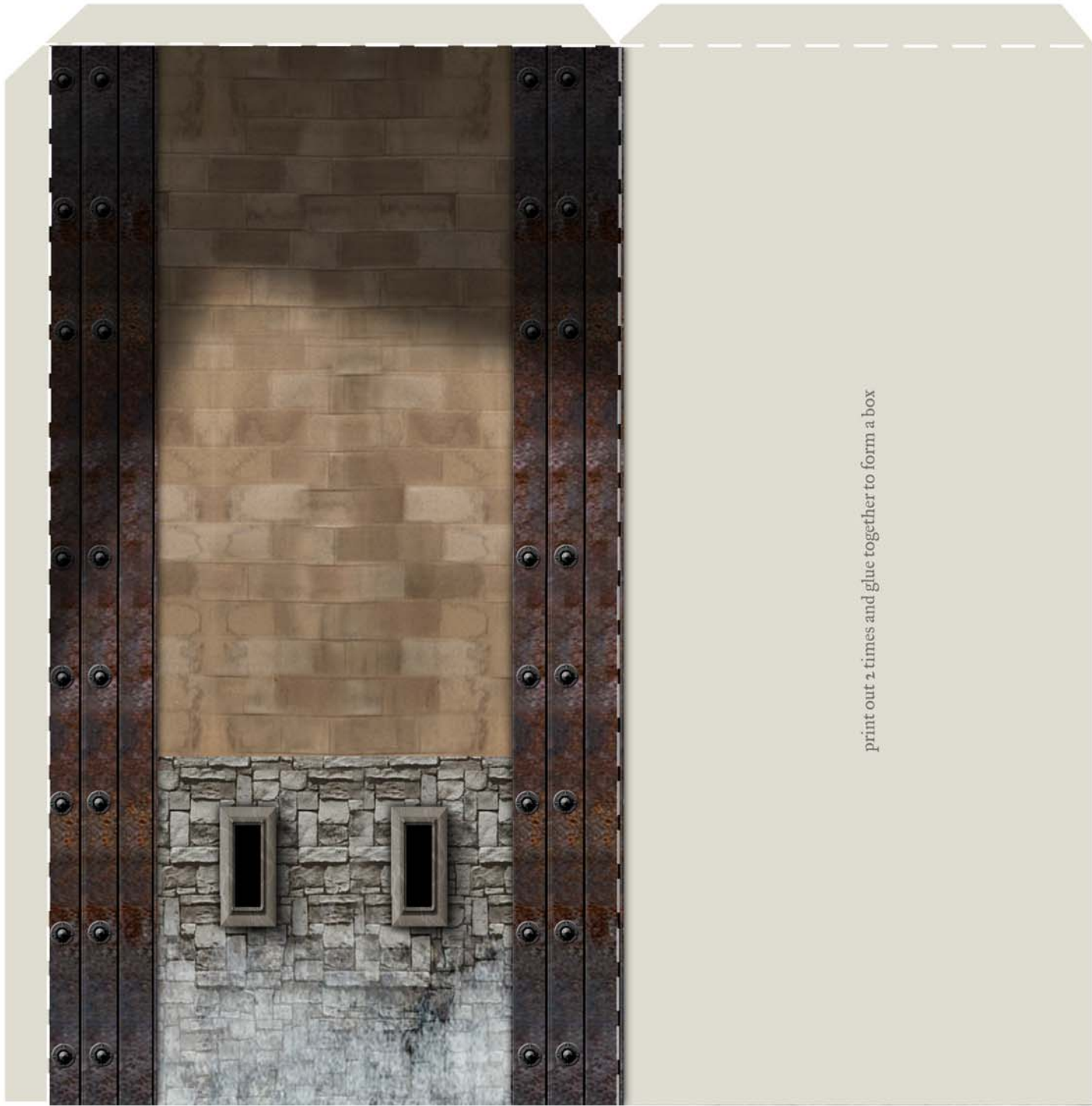
RUINS

right side

[print out 2 times to create box]

print out 2 times and glue together to form a box



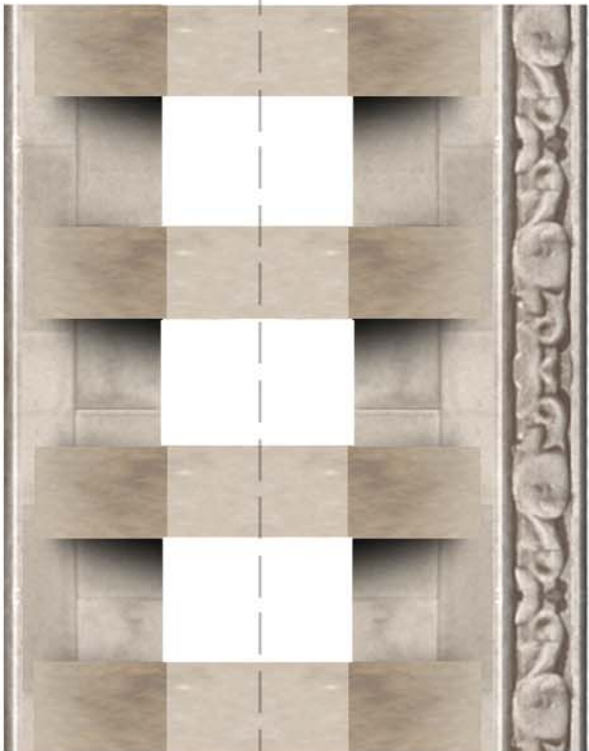


print out 2 times and glue together to form a box

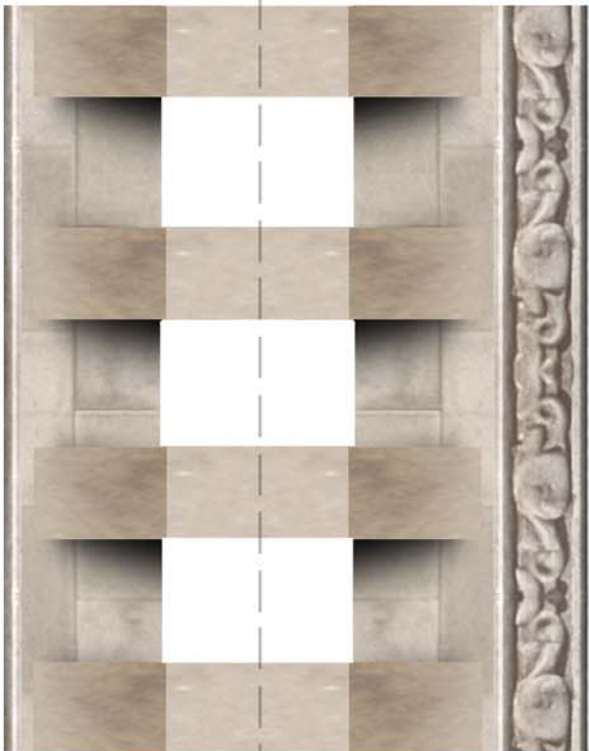


cut out slot for portcullis lift handle

TOP



score here



cut out slot for portcullis lift handle

cut out, score along dashed line, fold over and glue to form a single piece

score here

END CRENELLATIONS

