

CREATIVE PARK

<http://www.canon.com/c-park/>

Tiger



- Mammalia Carnivora Felidae
- Length (incl. tail): approx. 1.4 to 2.8m (approx. 4.6 to 9.2feet)
- Weight: approx. 90 to 306kg (approx. 198.4 to 674.6lbs)
- Habitat: Rainforests, mangroves, boreal forests (taigas), etc.

Tigers are the largest members of the feline family. They inhabit a wide area of land, stretching from Siberia to north-eastern China, India, and Indochina and make their habitat mainly in rainforests, mangroves, and boreal forests (taigas). Tigers are not fast runners. However, they are able to jump amazingly well, a skill they make use of when sneaking up and pouncing on their prey. The hair on their back is yellow with black, horizontal stripes. Tigers found in the northern regions tend to be light yellow in color while those in the southern regions are more orangish. For food, tigers eat almost anything depending on what they can find in their place of habitat, from insects (locusts, etc.) and small animals to large ones such as deer, wild boars, and cows.



Tools	Notation Key
Scissors	———— Scissors line
Paste, or woodwork glue Mountain fold
Stencil pen, or bodkin	- - - - Valley fold
Ruler	+ Glue spot
	A1, B1 Parts No.

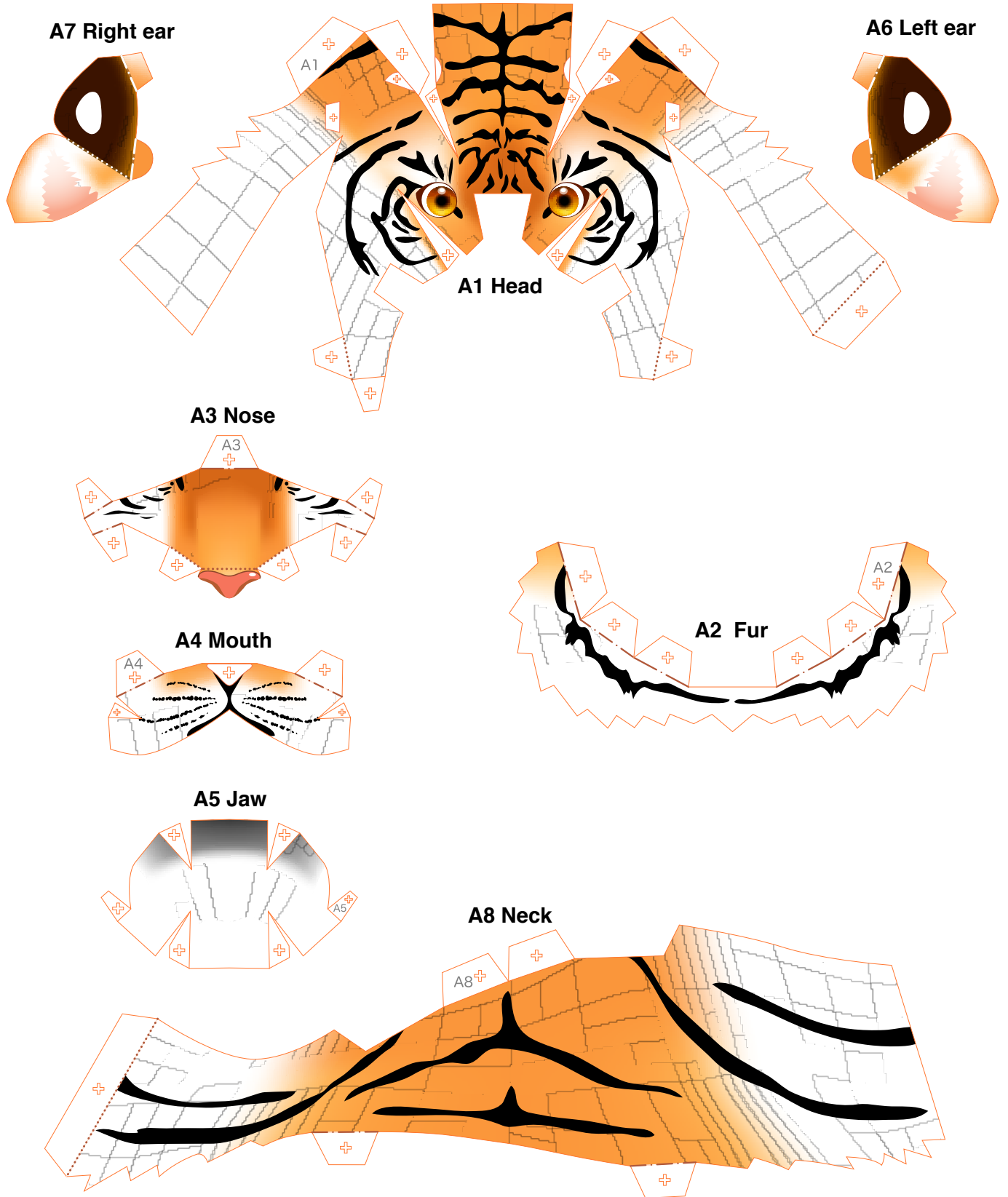
- ◆ The Pattern are divided into three blocks:
A (head), B (body), and C (legs).
Follow the instructions for each block to assemble your tiger.

<Caution>

- ✘ Keep scissors and glue away from small children.
- ✘ Be careful not to cut your fingers when using scissors.

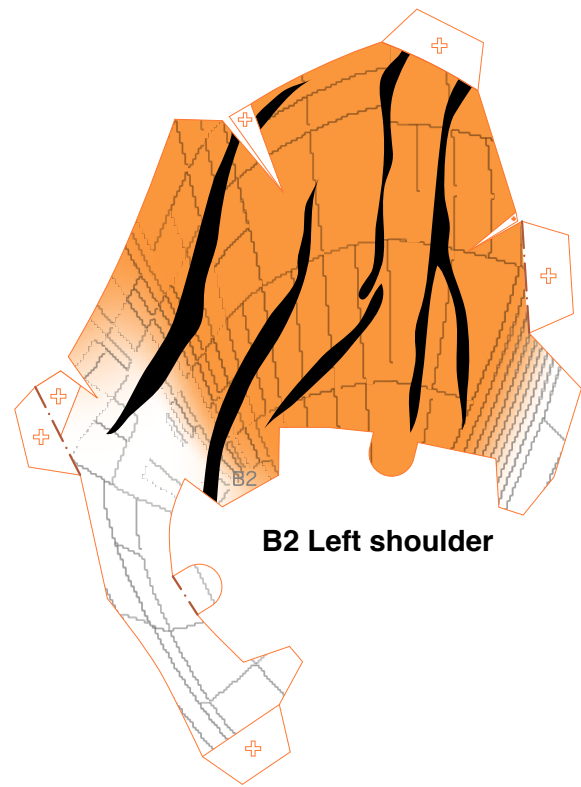
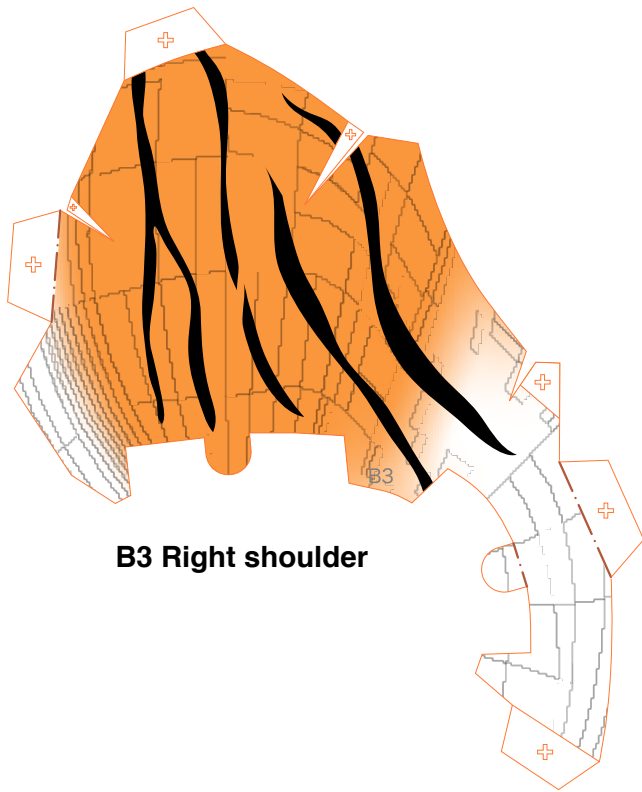
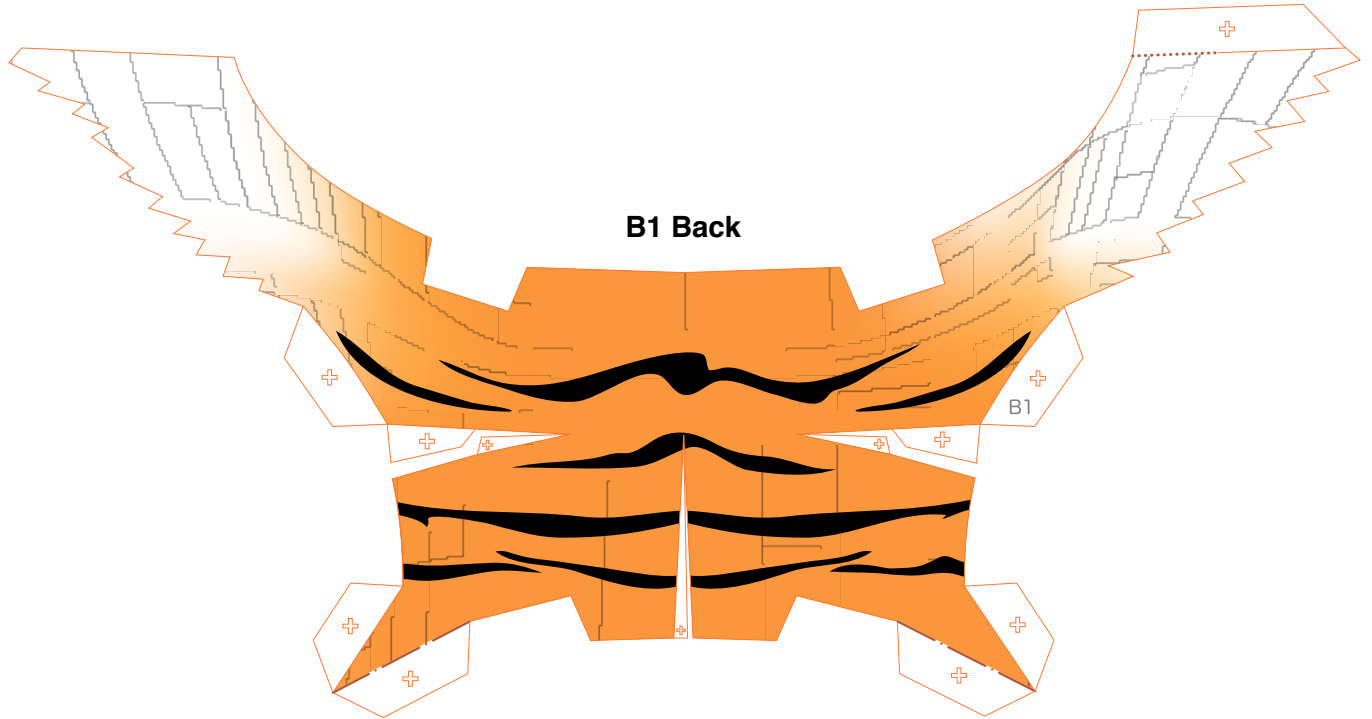
A Head parts

Refer to Assembly Instructions: Page1 / Page2.



B Body Parts

Refer to Assembly Instructions: Page2 / Page3.

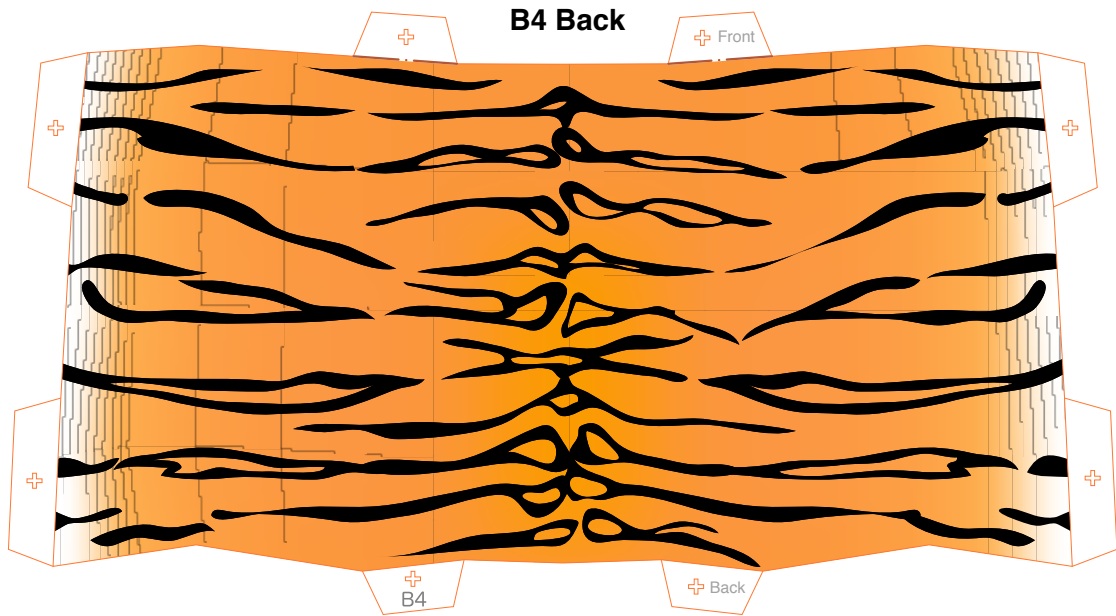


B3 Right shoulder

B2 Left shoulder

B Body Parts

Refer to Assembly Instructions: Page3.



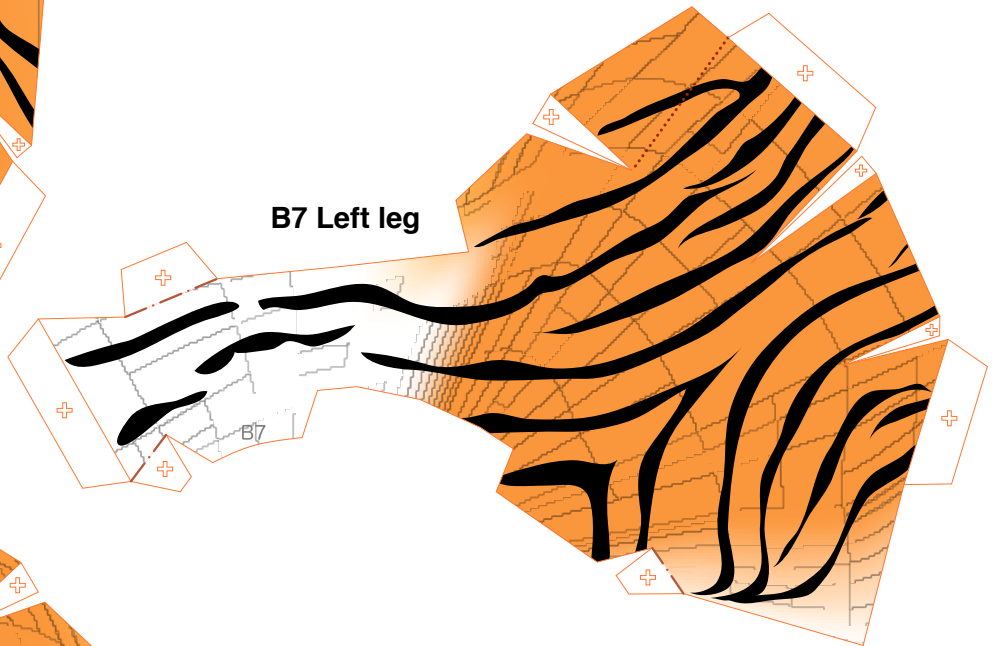
B Body Parts

Refer to Assembly Instructions: Page3.

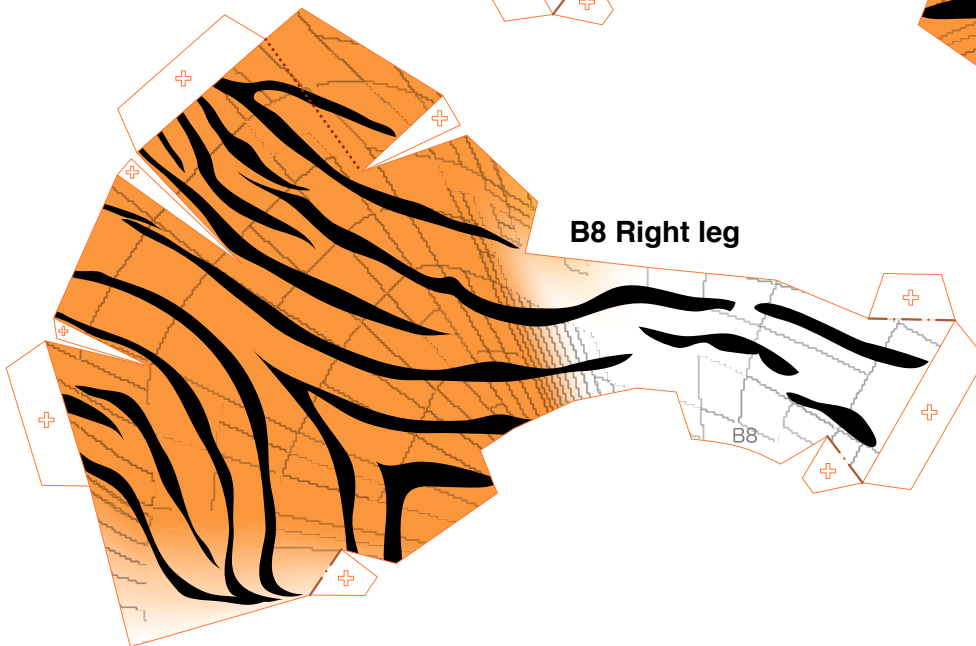
B6 Rump



B7 Left leg



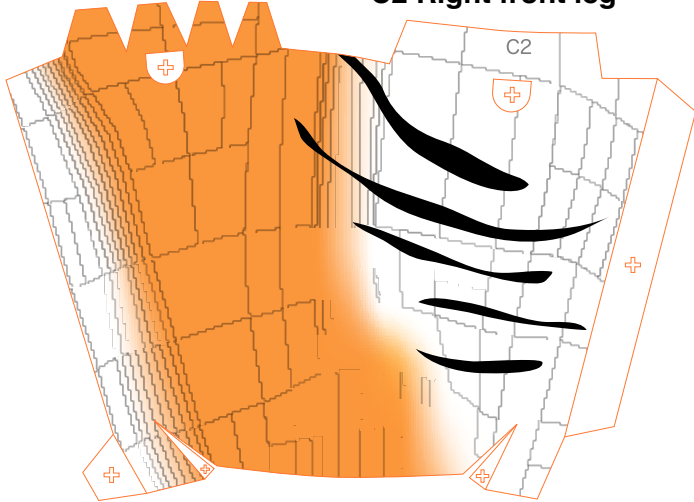
B8 Right leg



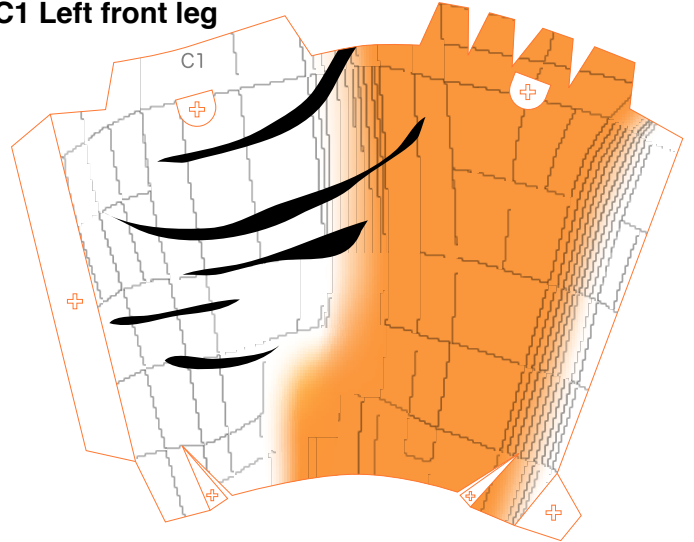
C Leg parts

Refer to Assembly Instructions: Page3 / Page4.

C2 Right front leg



C1 Left front leg



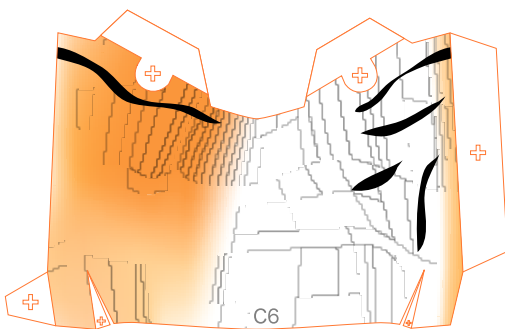
C5 Right hind leg



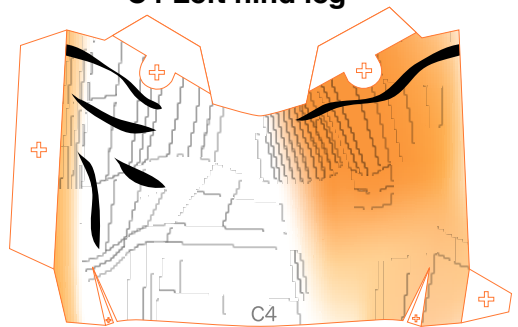
C3 Left hind leg



C6 Right hind leg

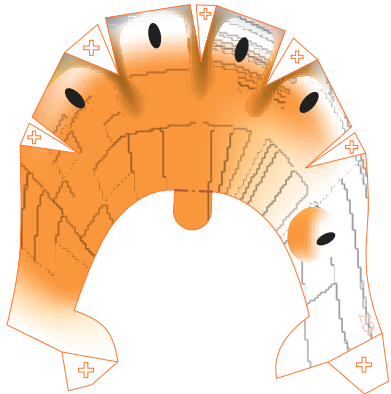


C4 Left hind leg

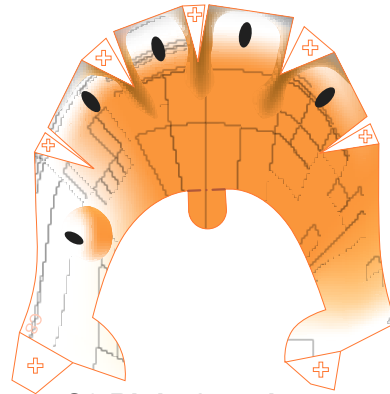


C Leg parts

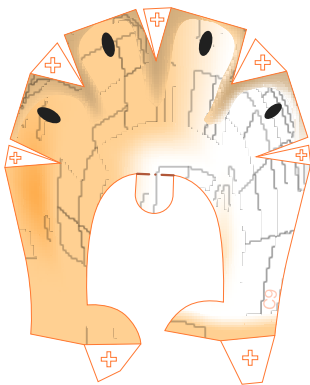
Refer to Assembly Instructions: Page4.



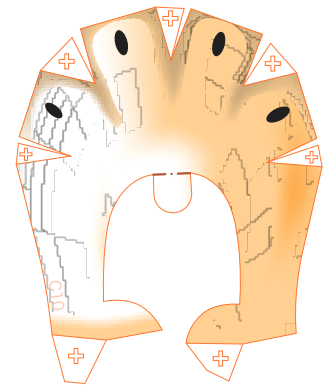
C7 Left front leg



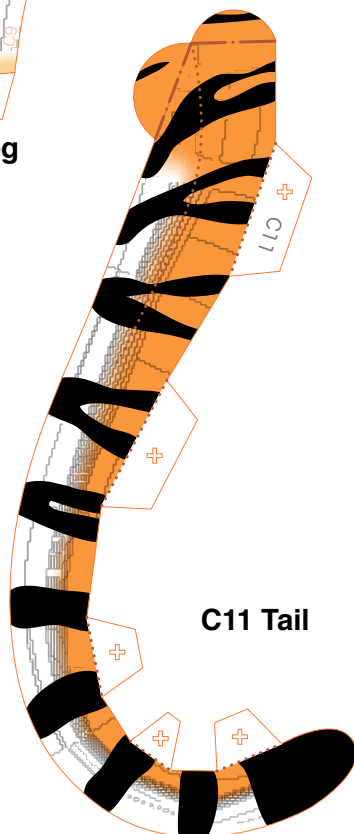
C8 Right front leg



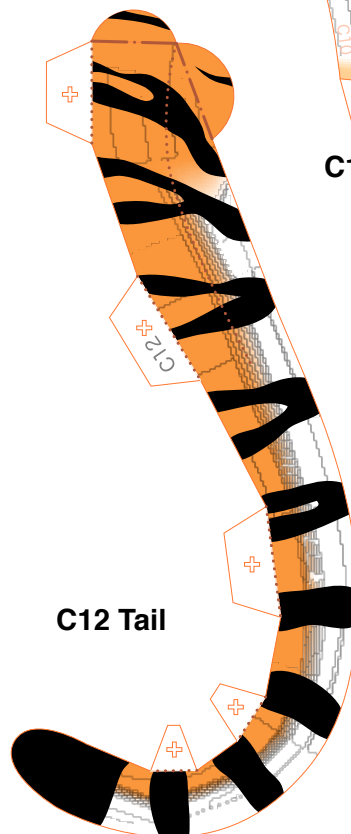
C9 Left hind leg



C10 Right hind leg



C11 Tail



C12 Tail

CREATIVE PARK

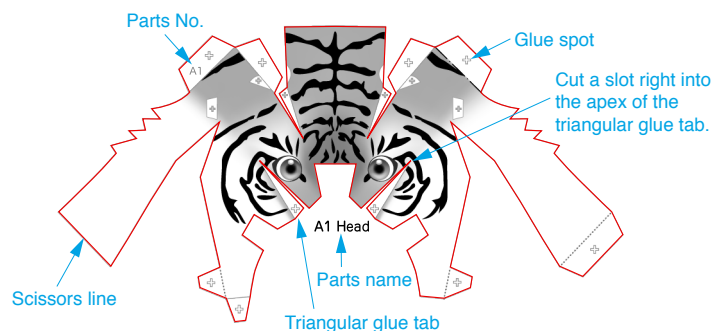
<http://www.canon.com/c-park/>



A Assemble the head

Use pattern: Page2.

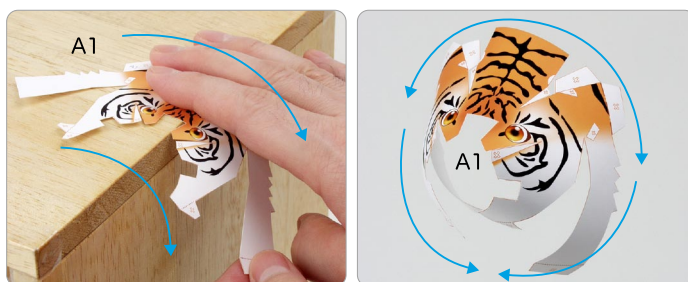
- ① Cut out A1 by cutting along the lines.
- ★ Cut along the line marked —.



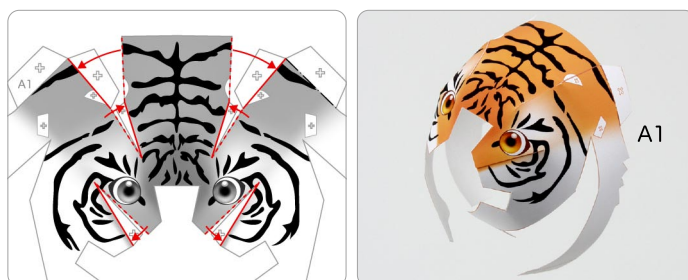
- ② Make a mountain fold and valley fold on A1.
- ★ Trace along the mountain fold line and valley fold line with a stencil pen, scoring it to make it easier to fold.



- ③ The parts will be easier to assemble if curled.
- ★ Using the photo as a guide, apply pressure with the palm of your hand, gradually curling the paper in the direction of the arrow.



- ④ Add a slight curl to A1 when attaching it.
- ★ Attach the triangular glue tabs so that the front side becomes convex.
- ★ Using the photo as a guide, attach in the direction of the arrow.



Tools	Notation Key
Scissors	- - - - - Scissors line
Paste, or woodwork glue	- · - · - · - Mountain fold
Stencil pen, or bodkin	- · - · - · - Valley fold
Ruler	+ Glue spot
	A1, B1 Parts No.

- ◆ The Assembly instructions are divided into three blocks: A (head), B (body), and C (legs). Follow the instructions for each block to assemble your tiger.
- ◆ ★ marks a basic assembly technique that remains the same regardless of the part. Instructions are printed only for the first instance.

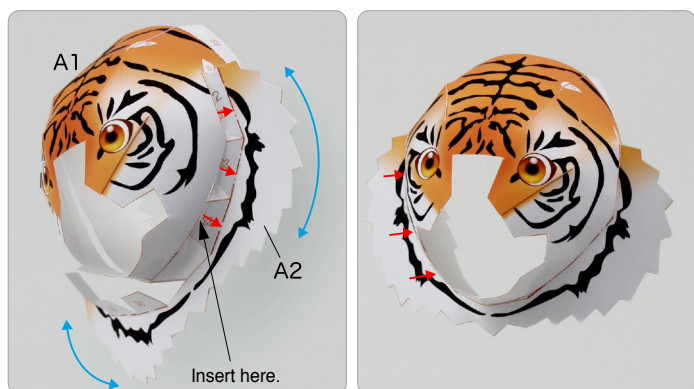
<Caution>

- ✘ Keep scissors and glue away from small children.
- ✘ Be careful not to cut your fingers when using scissors.

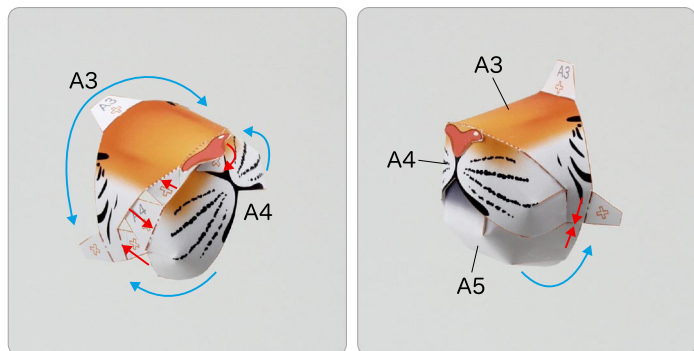
⑤ Paste together the remaining A1 glue tabs.



⑥ Attach A2 to A1.



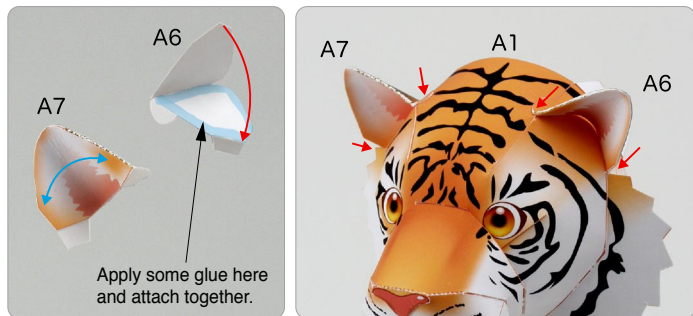
⑦ Attach A3 and A4, and attach A5 to them.



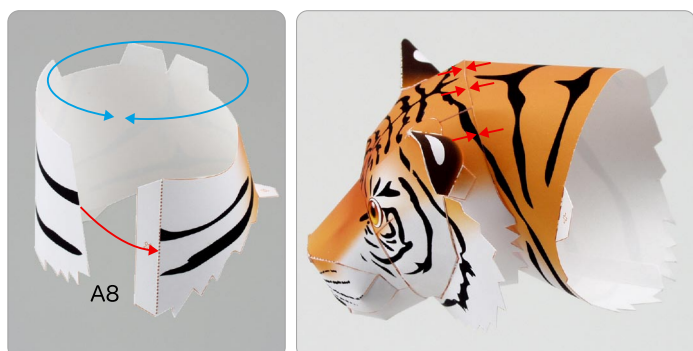
⑧ Attach the mouth to the head.



⑨ Assemble A6 and A7, and attach them to the head.



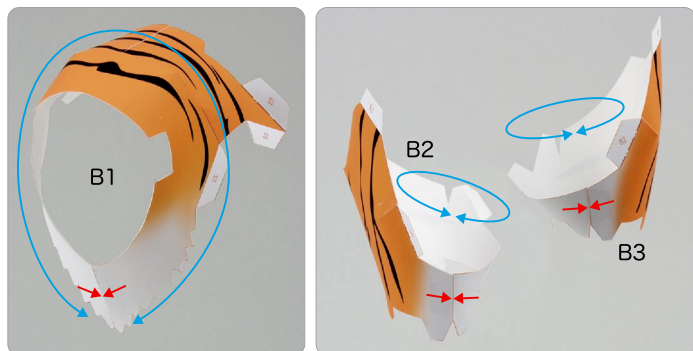
⑩ Assemble B8, and attach it to the head, and the head is complete.



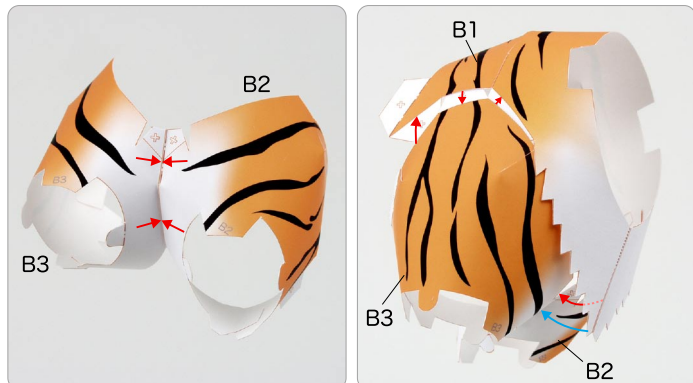
B Assemble the body

Use pattern: Page3 to Page5.

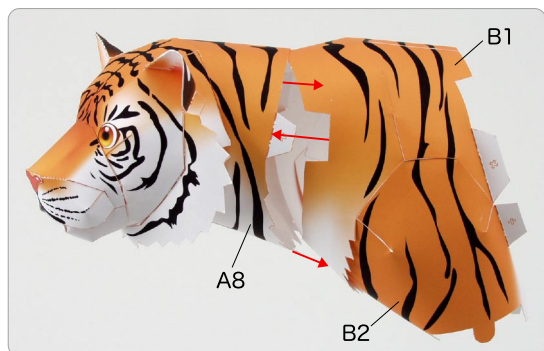
① Assemble B1, B2 and B3.



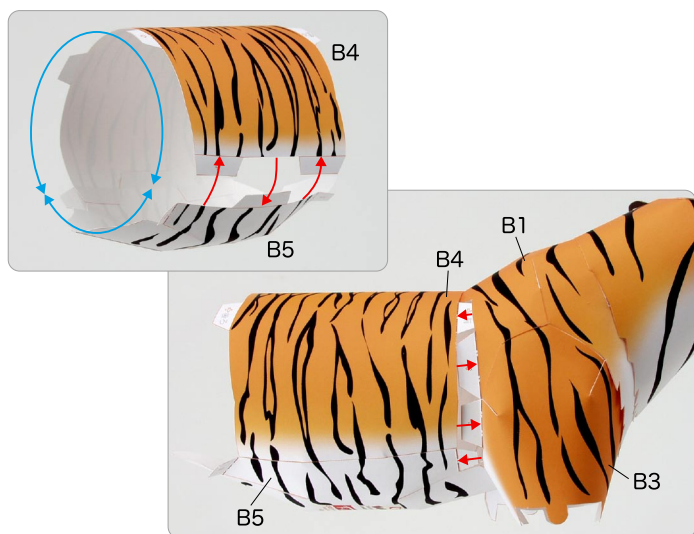
② Attach B2 and B3, and attach them to B1.



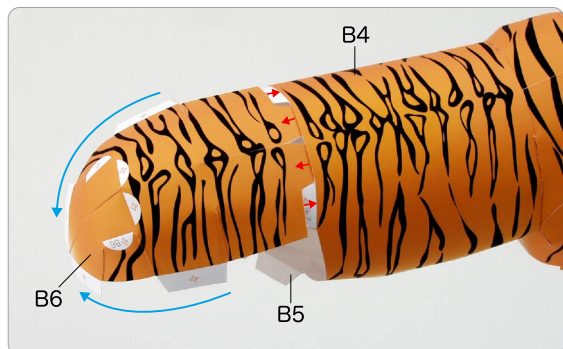
③ Attach A8 and B1.



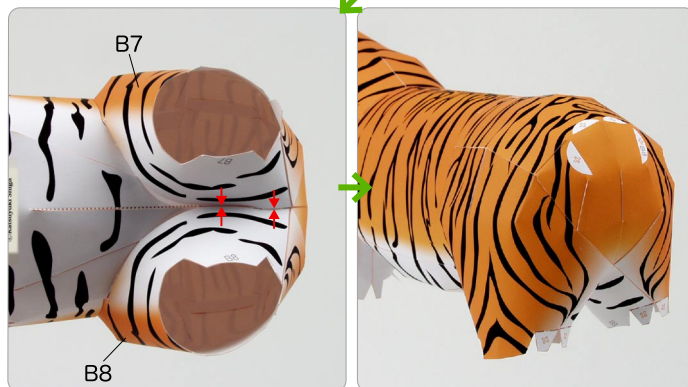
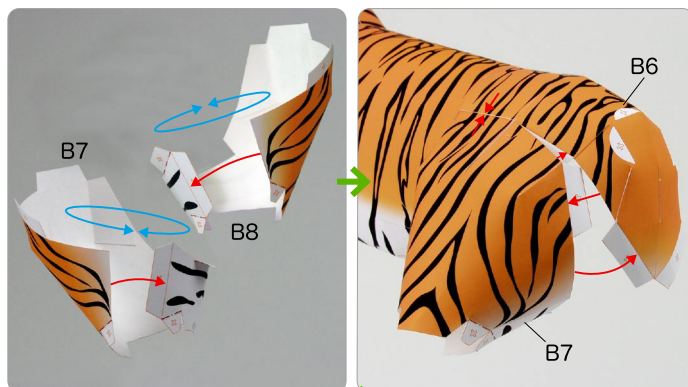
④ Attach B4 and B5, and attach them to the body you have just made.



⑤ Attach B6 to the body.



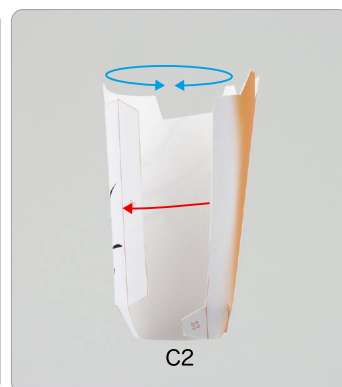
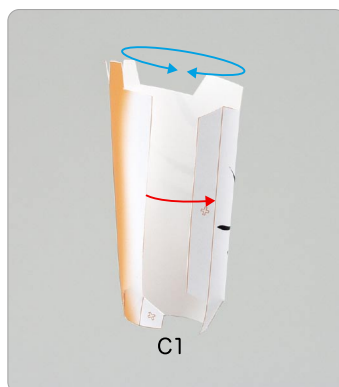
⑥ Assemble B7 and B8, and attach them to the body, and the body is complete.



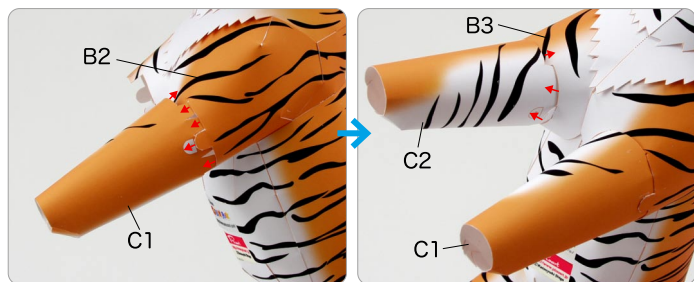
C Assemble the legs

Use pattern: Page6 / Page7.

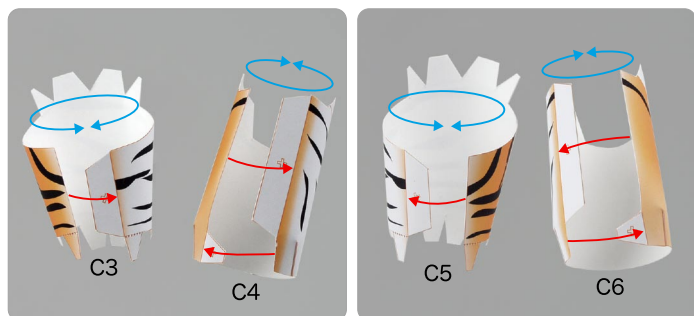
① Assemble C1 and C2.



② Attach C1 to B2, and attach C2 to B3.



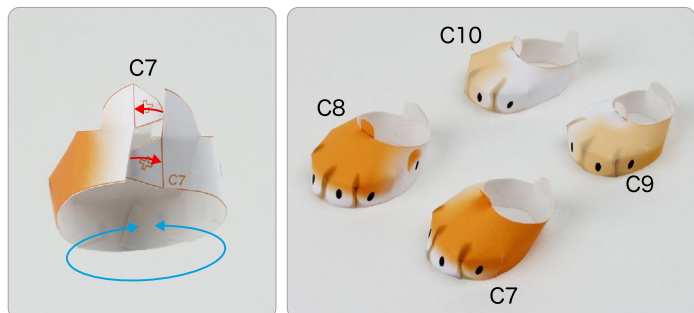
③ Assemble C3, C4, C5 and C6.



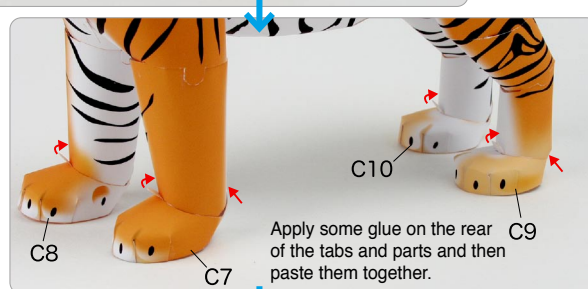
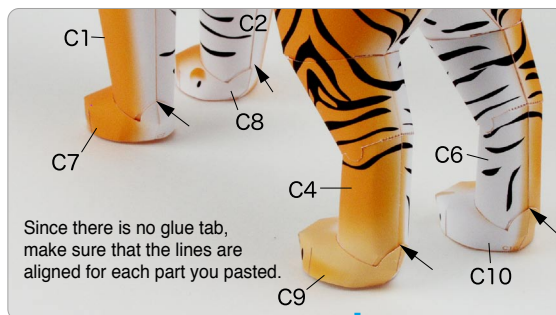
④ Attach C3 and C4 to B7 in order, and attach C5 and C6 to B8 in order.



⑤ Assemble C7, C8, C9 and C10.



⑥ Do not apply any glue yet but first make sure that each leg is stable. Then, paste the parts together with glue.



⑦ Assemble C11 and C12, paste them to the body, and your tiger is complete!

