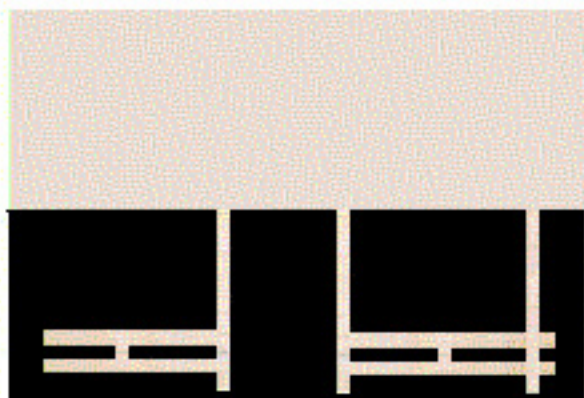
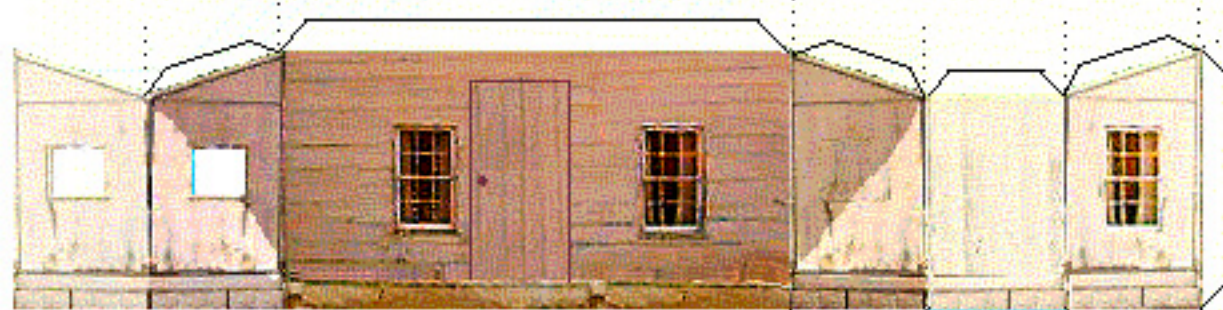


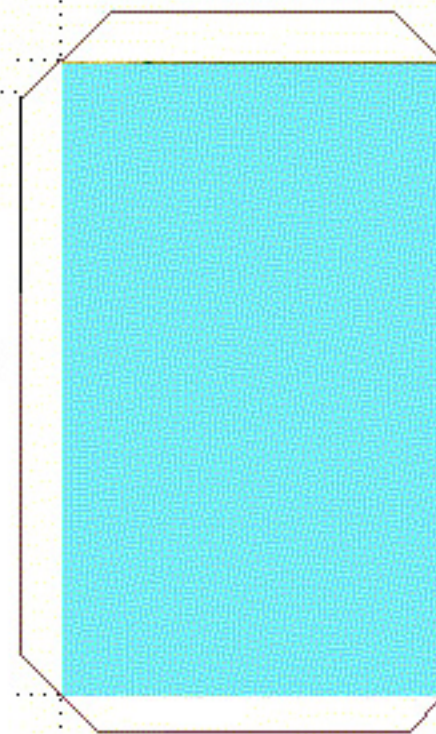
FRONT



FRONT



The Widow Leister House is located near the Angle and Copse of Trees at Gettysburg. This was the aiming point for Pickett's Charge on the third day of the battle. The house was used by General Meade as his headquarters during the battle. Here is where he held his council of war on the eve of the second day's fighting. Prior to the charge the area was subjected to two hours of artillery bombardment. Over shooting by the Confederates made Meade abandon the site for Power's Hill where he observed the action of the famous charge.



The Widow Leister House
Meade's HQ at Gettysburg
 N Gauge - 1/160 Scale

by Beepa Etc.
Paper Models